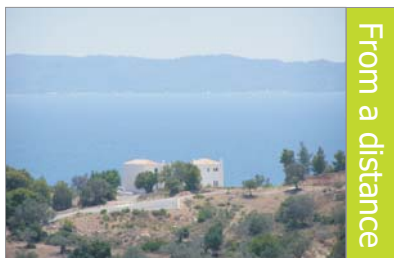


Sea View B

Porto Heli



Holiday home, 185 sq.m., in 3 levels in a coastal settlement (electricity supply, water supply, drainage, telephone supply) in Ververonda, Porto Heli. Spacious verandas and open-air areas with amazing view to the sea and Spetses island. The way to the beach is 300 meters long. The house is equipped with central heating, boiler, solar water heater, alarm, central cleaning system.

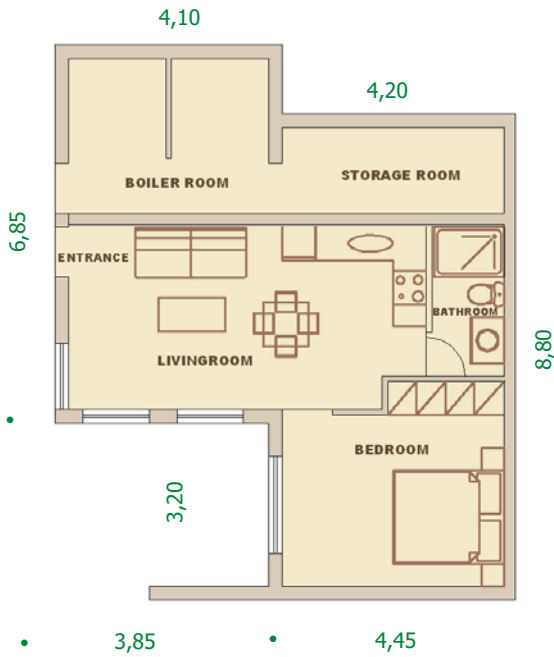
Basement : 65 sq.m. with independent entrance. Living room, bedroom, bathroom, boiler room and storage room.

Ground floor : 58 sq.m. with living room and fireplace, dining room, kitchen and W.C.

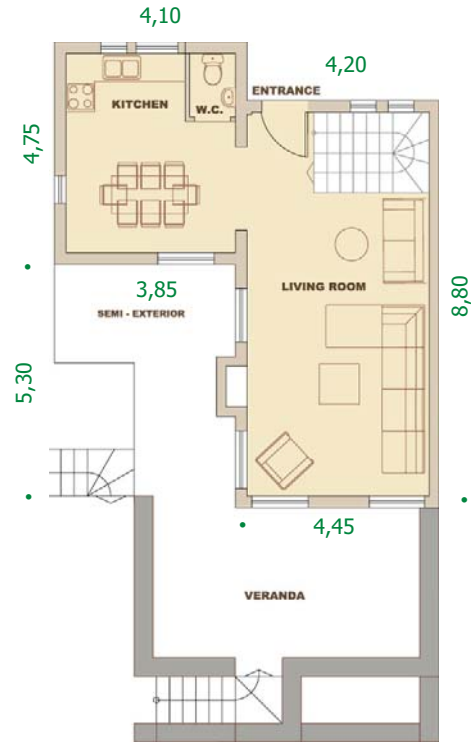
1st floor : 62 sq.m. with 3 bedrooms and 2 bathrooms (1 Master room with bathroom).

Exteriors : parking, spare water tank, barbeque, garden. Pool is optional.

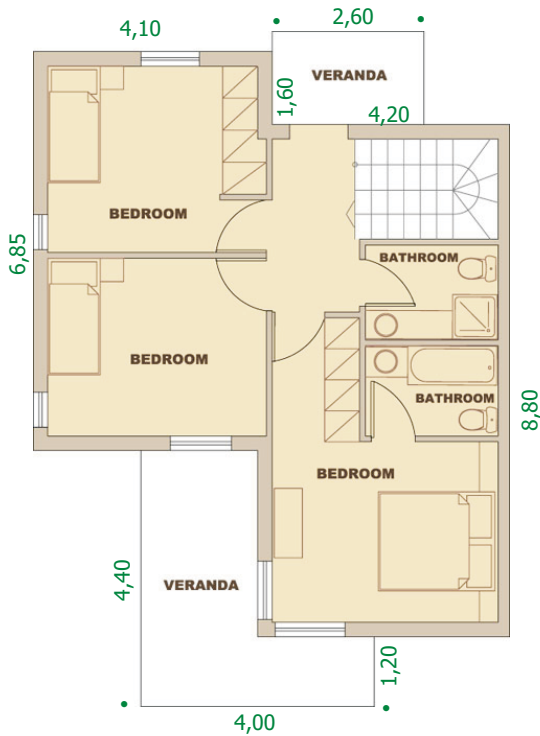
Sea View B



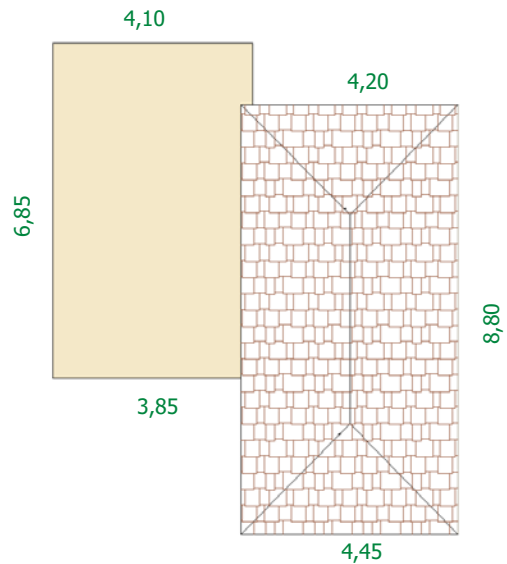
Basement : 65 sq.m.



Ground floor : 58 sq.m.



First floor : 62 sq.m.



Roof

Sea View A & B

Plots

